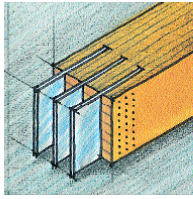


Produce multiple-shear steel-timber joints more easily and economically using the WS system





WS fastening system from SFS intec: easier and faster. That's convincing!

Boost value added with little effort

You can assemble high-quality steel/timber joints using the WS System. Low equipment costs make the new WS System a very interesting prospect even for small and medium-sized businesses.

Convincingly simple system produces durable quality

The WS System is a self-drilling dowel system for multi-profile steel/timber joints. The WS self-drilling dowel, the CF WS/M manual setting tool or the CF WS/P setting frame, together with the basic design calculation data, are the component parts of the new jointing system.

The dowels are inserted in the timber and through the steel plates in a single, time-saving operation without pilot drilling. Up to 3 steel plates, each up to 3/16" thick, can be penetrated.

The rear surface of the timber is not penetrated.

Greater cost-effectiveness due to shorter working process.

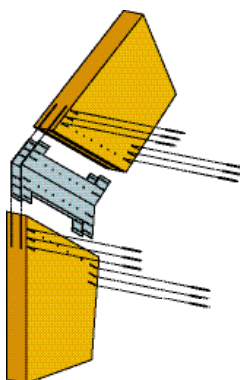
Producing joints for framework structures has been a complicated process to date.

The new WS System reduces the procedure to a few operating steps:

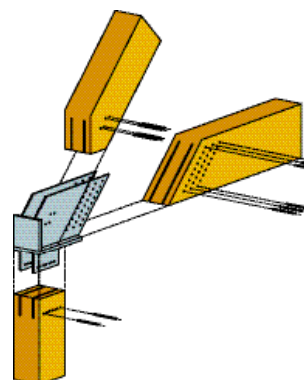
1. fitting the steel plate
2. aligning and fixing it in position
3. inserting the dowel

3 Advantage: form-fitting direct fastening results in maximum fitting accuracy!

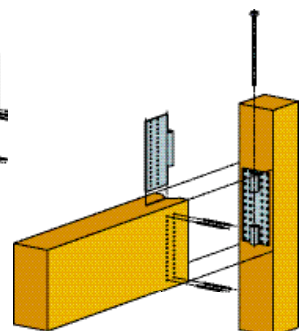
< pilot drilling in timber
 < pilot drilling in steel
 < touching up
eliminated!



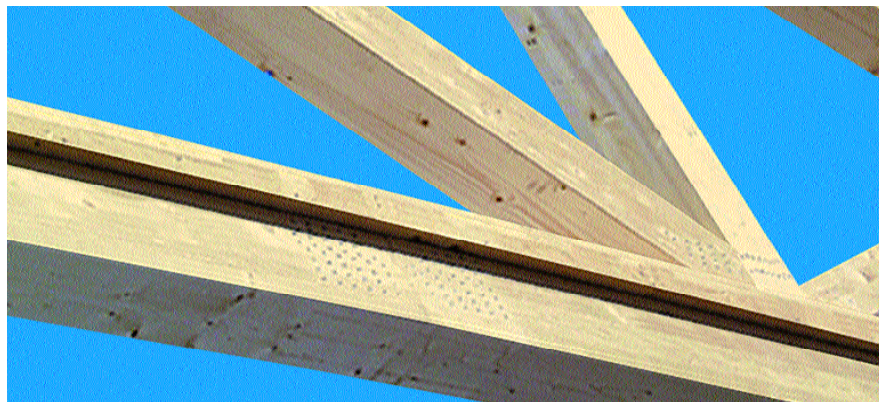
Frame corner



Supporting joint



Post and rail joint



User-friendly, speedy operation using the CF WS/P setting frame

The pneumatic power-assisted CF WS/P setting frame is especially suitable for more extensive, larger-scale applications.

Depending on joint size, it can be used to insert up to 150 WS dowels per hour.

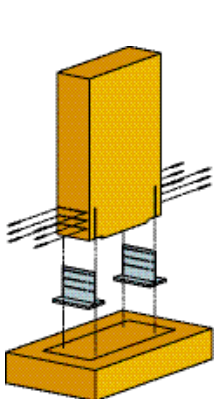


Work easily and flexibly with the CF WS/M manual setting tool

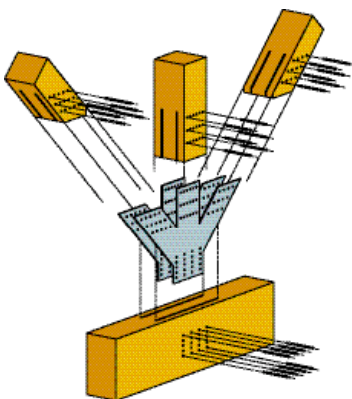
In smaller-scale applications the WS self-drilling dowels from SFS intec are inserted securely and efficiently using the CF WS/M manual setting tool.

The powerful drive unit with dowel guidance enables work to be performed flexibly in prefabrication operations and on the construction site.

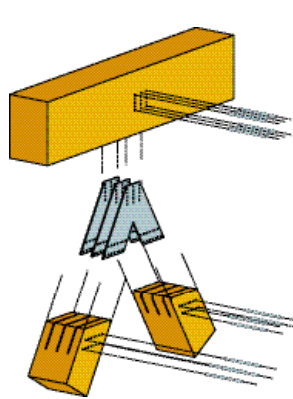
The dowels are usually installed flush or slightly countersunk. However, by means of the depth stop the dowels can also easily be evenly set slightly above or further below the surface (fire protection covering).



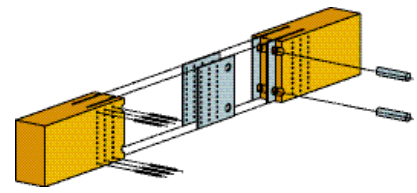
Fixed column base plate



Framework joint



Framework joint

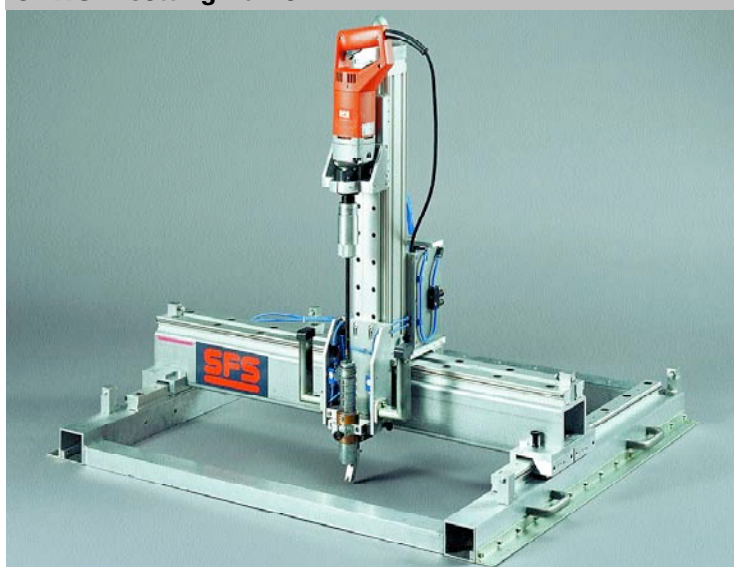


Assembly joint

WS fastening system: enhanced efficiency in structural timberwork. The ideal solution!



CFWS/P setting frame



CFWS/M man. set. tool



In order to ensure optimum system security we recommend using exclusively WS setting tools. In manual setting, special attention must be paid to inserting the WS dowel at right-angles.

WS-T self-drilling dowel

- A** T30/40 socket drive
- B** Underhead thread
- C** Shank section
- D** Drill point

WS-T-1/5 x L fastener range

Type		Material T=carbon steel		Diameter (in.)	Length (in.)	Timber width (in.)	Number of steel plates 3/16" thick
WS	-	T	-	1/5	x 2-7/8	3-1/8	1
WS	-	T	-	1/5	x 3-2/3	4	1
WS	-	T	-	1/5	x 4-7/16	4-3/4	1
WS	-	T	-	1/5	x 5-1/4	5-1/2	2
WS	-	T	-	1/5	x 6-1/32	6-1/3	2
WS	-	T	-	1/5	x 6-13/16	7	3
WS	-	T	-	1/5	x 7-13/32	7-7/8	3

Max. penetration thickness: 3 x 3/16" steel plate in 1016 CR steel.*

WS-T-1/4 x L fastener range

Type		Material T=carbon steel		Diameter (.in)	Length (.in)	Timber width (.in)	Number of steel plates 3/16" thick
WS	-	T	-	1/4	x 4-7/16	4-3/4	1
WS	-	T	-	1/4	x 5-1/4	5-1/2	2
WS	-	T	-	1/4	x 6-1/32	6-1/3	2
WS	-	T	-	1/4	x 6-13/16	7	3
WS	-	T	-	1/4	x 7-13/32	7-7/8	3
WS	-	T	-	1/4	x 8-3/8	8-2/3	3
WS	-	T	-	1/4	x 9-3/16	9-1/2	3

Max. penetration thickness: 3 x 3/16" steel plate in 1016 CR steel.*

* Higher steel strengths can result in failures during insertion in the absence of additional measures and should therefore only be used after consultation with us.

If you have any further questions about the WS System from SFS intec or our extensive range of fastening systems, just phone us.

Technical advice and sales service

In the U.S.

SFS intec, Inc.
FasteningSystems
Spring St. & Van Reed Rd., P.O. Box 6326
Wyomissing, PA 19610
www.sfsintecusa.com
Tel 800-234-4533
610-376-5751
Fax 610-376-8551

In Canada

SFS intec, Inc.
FasteningSystems
880 Cranberry Court
Oakville, Ontario L6L 6J7
www.sfsintec.biz
Tel 866-847-5400
905-847-5400
Fax 905-847-5366

SFS intec

To make you more competitive.